



Mark Innes, Consulting Municipal Relations Specialist
#700, 500 - 4th Avenue SW
Calgary, AB T2P 2V6

August 12, 2015

Edmonton Federation of Community Leagues
7103 105th Street
Edmonton, Alberta T6E 4G8

Re: Notification of Proposed 20m Monopole Telecommunications Tower Site
Rogers File: W2556 Summerlea
Legal Land Description: Plan 8322082; Block 29, Lot 7

Rogers Communications Inc. ("Rogers") is pleased to submit to you the captioned package for your information.

Rogers, in compliance with Industry Canada, Spectrum Management and Telecommunications Client Procedures Circular for the Radiocommunication and Broadcasting Antenna Systems, CPC-2-0-03, is proposing a new telecommunications tower facility to be placed on the subject lands. Rogers is proposing a 20m monopole tower that will accommodate antennas and communications equipment for Rogers Communications Inc.

Summarily, this report contains a description of the site location and context, the proposed wireless radio base station, environmental health standards and supplementary documents.

In consideration of the acquisition process and the municipal process, the proposed facility is in the most suitable location and has been designed with consideration to the land uses in the immediate area. When complete, the facility will provide continuous wireless coverage and added cellular capacity for the surrounding area.

If you have any questions or wish to discuss this application further, please do not hesitate to contact me. **Please do respond to the undersigned by September 16, 2015 with any comments or concerns.**

Sincerely,
Rogers Communications Inc.

Mark Innes
Consulting Municipal Relations Specialist
Rogers Communications Inc.
(403) 818-7561
mark.innes@rci.rogers.com

enclosure: Telecommunications Facility Project Description
Telecommunications Site Survey Plan
Telecommunications Elevation Drawing
Telecommunications Antenna Structure Sample Photo and Photo Simulation
Notification Radius

Notice of Proposed Cell Tower

August 12, 2015

Rogers File #: Summerlea W2556

FACILITY PROPOSAL

Location and Site Context

Rogers Communications Inc. ("Rogers") is proposing to construct a 20m monopole telecommunications (cellular) tower facility ("Facility") and supporting ground-level equipment cabinets on the ground level within the City of Edmonton at 17504 90 Avenue, Plan 8322082; Block 29; Lot 7 (see location noted in red below). The proposed facility will be situated on leased premises at N 53° 31' 31.9", W -113° 37' 24.9"; dimensions outlined on the sketch plan included in this notification. The subject parcel's zoning district is classified as DC2 - Site Specific Development Control Provision.

Proposed Facility Need & Purpose

Due to subscriber demand for improved wireless service, Rogers Communications Inc. produced a search ring for an appropriate telecommunications site in this urban area. As a result, Rogers has secured a site as indicated on the air photo below. Rogers Radio Engineering Department selected this area as an appropriate location to locate a proposed 20m monopole tower so as to maximize wireless coverage and capacity for this community and the facilities located in the area.

Site Map



Antenna Configuration

The structure will support antennas (approximately 2m antennas - depending on manufacturer). The initial antennas will be located at 19m (centre of antenna). Future space is allocated for additional technical requirements as they are needed.

Beneath the currently proposed antenna equipment, this area can be taken into consideration for future equipment use either by Rogers or for co-location purposes should a request for co-location be made by another carrier/proponent.

Construction and Maintenance

The construction period will last 30 to 45 days and, once construction is complete, the facility will remain unoccupied. The only traffic generated at this site will be for routine monthly maintenance visits by Rogers personnel.

No activities within this telecommunications facility will produce any airborne emissions, odors, noxious or toxic materials. The site will not require water or sanitary facilities.

The proposed telecommunications tower, per Transport Canada regulations and review, does not require lighting.

Rogers attests that the installation will respect good engineering practices including structural adequacy.

Site Selection and Colocation

Among the factors considered during the site selection process are expected usage patterns of wireless service, local terrain, interaction with existing radio base stations and line of sight requirements for high quality communications.

Each site that is investigated must go through an internal review by radio frequency, transmission and civil engineering groups in order to qualify. There are no suitable collocate opportunities within the vicinity of the proposed location. **In the future, Rogers will welcome tower sharing opportunities for this tower proposal.**

Photo Simulation

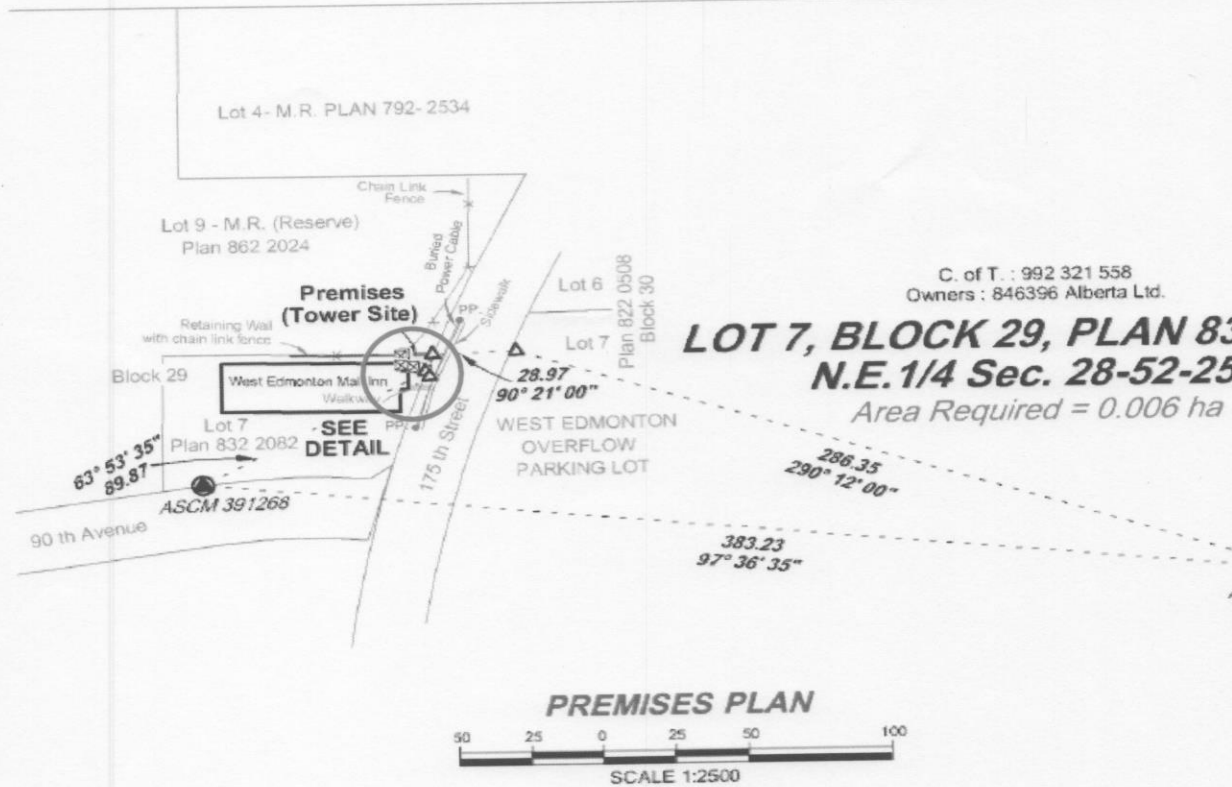




Site Survey

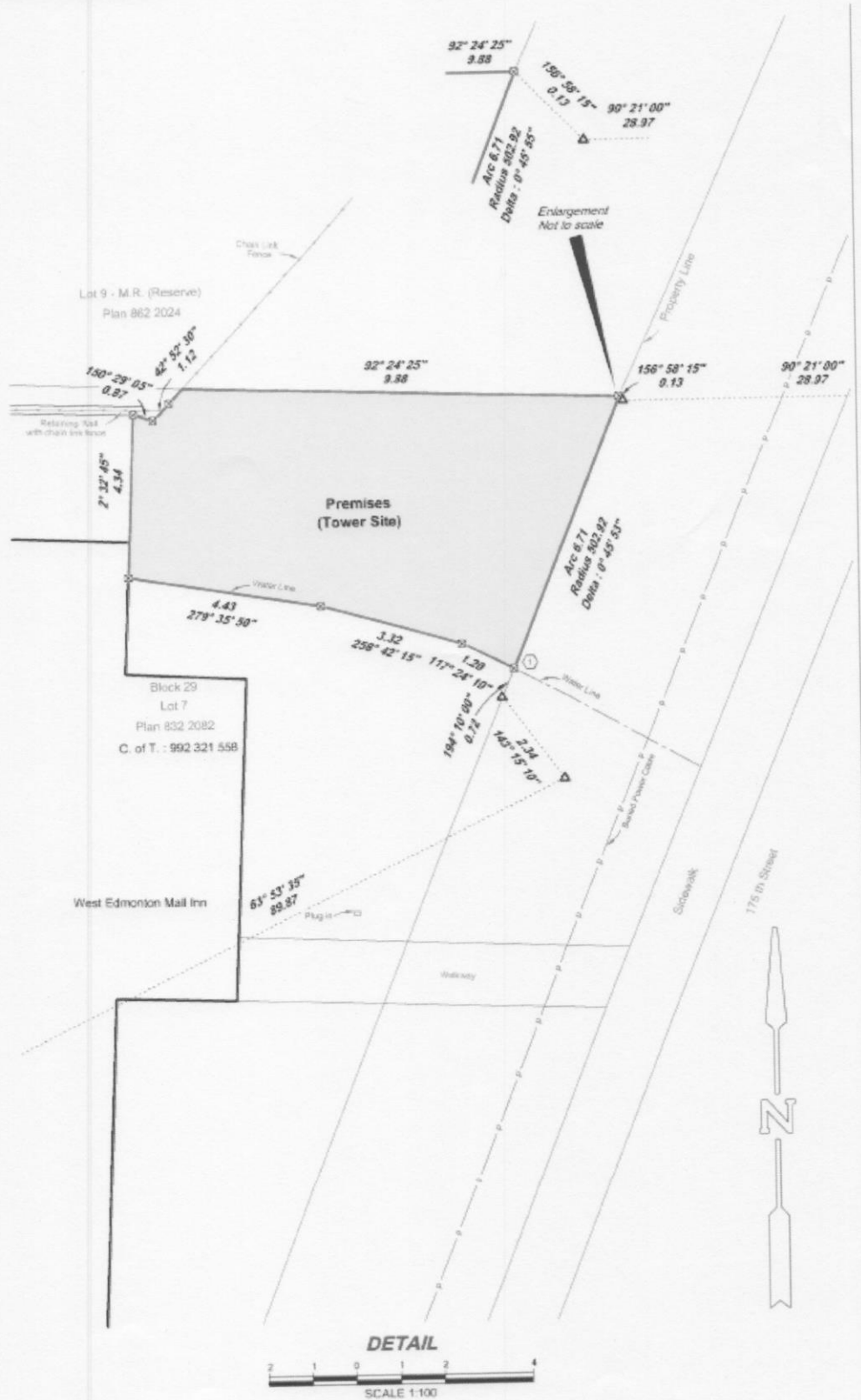
The design is a 20m monopole style telecommunications tower facility within the lease premises, as shown in the attached drawing. Rogers will install an equipment cabinet referred to as a Walk-In-Cabinet (aka "WIC") within the fenced premises. The cabinet houses equipment necessary for the operation of the Facility. The cabinet is armed with a 24 hour alarm system to ensure protection from vandalism and to warn for environmental hazards such as flooding or fire.

S.E. 1/4 Sec. 33-52-25-4





Site Survey (Detail)





ENVIRONMENTAL HEALTH STANDARDS / SAFETY CODE 6 GUIDELINES

Industry Canada manages the radio communications spectrum in Canada. Among other requirements, Industry Canada requires cellular telecommunications facilities to comply with guidelines established by Health Canada in order to protect people who live or work near these facilities. Health Canada safety guidelines are outlined in their Safety Code 6 document and are among the most stringent in the world. All Rogers Communications facilities exceed the required standards. Rogers attests that the radio installation described in this notification package will be installed and operated on an ongoing basis so as to comply with Health Canada's Safety Code 6, as may be amended from time to time, for the protection of the general public including any combined effects of nearby installations within the local radio environment.

Industry Canada requires that the installation and modification of antenna systems be done in a manner that complies with appropriate environmental legislation. This includes the CEAA (Canadian Environmental Assessment Act) and local environmental assessment requirements where required by the CEAA.

Rogers attests that the radio antenna system described in this notification does not qualify as a Designated Project under the Canadian Environmental Assessment Act and is excluded from environmental assessment under the Canadian Environmental Assessment Act.

PUBLIC CONSULTATION

The Public Notification for this proposed new telecommunications tower site is being carried out following The City of Edmonton's Telecommunications Policy in conjunction with Industry Canada. The City of Edmonton will provide a recommendation to the federal government on whether the City thinks the location and appearance of Rogers' proposed 20m monopole tower facility is appropriate. The total notification radius required for this specific site is 150m from the tower base. Rogers is requesting any written public comments returned within 30 days of receipt of this package. Upon receiving any comments from the public, Rogers will respond accordingly and submit a formal package to the City of Edmonton and await a final notice of decision.

Please do respond to the undersigned by **September 16, 2015** with any comments or concerns. Written comments will be included in the formal submission package.

CONCLUSION

Wireless communications contribute to the quality of everyday life. The proposed Facility will satisfy demand for better service to current and future subscribers in the area.

The cellular coverage will provide additional access to emergency services including paramedics, police and fire.

If you have any questions, or require further information about the proposed facility, please feel free to contact:

Mark Innes

Mark Innes Consulting
Unit 1, 712 - 1 Avenue N.W.
Calgary, Alberta T2N 0A1
Telephone: (403) 818-7561
Email: mark.innes@rci.rogers.com



City of Edmonton

Erica Peacock, Development Planner I
10th Floor, 10250 101 Street
Edmonton, Alberta T5J 3P4
Telephone: (780) 496-8486
Email: erica.peacock@edmonton.ca

Rogers Communications Inc.

Carol Robinson, Municipal Relations Specialist, Midwest Region
Suite 700, 500 4th Avenue S.W.
Calgary, Alberta T2P 2V6
Telephone: (403) 730-2627
Fax: (403) 730-2971
Email: carol.robinson@rci.rogers.com

Industry Canada – Spectrum Management and Telecommunications Contact:

Northern Alberta District Office
9700 Jasper Avenue NW, Suite 725
Edmonton, Alberta T5J 4C3
Telephone: toll-free 1 (866) 694-8389

For further information regarding health and safety and industry regulations please refer to the following links:

Antenna Systems and You

<http://ic.gc.ca/antenna>

Frequently Asked Questions (FAQ) on Radiofrequency (RF) Energy and Health

<http://www.ic.gc.ca/eic/site/smt.gst.nsf/eng/sf08792.html>

Health Canada's Radiofrequency Exposure Guidelines

http://www.hc-sc.gc.ca/ewh-semt/pubs/radiation/radio_guide-lignes_direct-eng.php

Health Canada

<http://www.hc-sc.gc.ca/index-eng.php>

Canadian Wireless Telecommunications Association

<http://www.cwta.ca/CWTASite/english/healthsafety.html>

Rogers Communications Inc.

<http://www.rogers.com>

Please be advised that you may provide feedback by contacting the representatives above, via email, telephone or email.

Plan Showing Survey of

SCHEDULE 'B' Premises Including Utility Area

within

LOT 7, Block 29, Plan 832 2082

in

N.E. 1/4 Sec. 28 Twp. 52 Rge. 25 W. 4 Mer.

CITY OF EDMONTON

TOWER SITE COORDINATE TABLE			
NAD 83 (GNSS)			
Location	Geographical		U.T.M. (Zone12) C.M.+111°
	Decimal Degree	Degree Min. Sec.	
Premises Centre	53.525516 N. Lat.	53°31' 31.9"N. Lat.	5933935.09 N
	-113.623575 W. Long.	113°37' 24.9"W. Long.	326094.01 E
N.W. Corner	53.525537 N. Lat.	53°31' 31.9"N. Lat.	5933937.60 N
	-113.623644 W. Long.	113°37' 25.1"W. Long.	326089.50 E
S.W. Corner	53.525498 N. Lat.	53°31' 31.8"N. Lat.	5933933.27 N
	-113.623644 W. Long.	113°37' 25.1"W. Long.	326089.31 E
S.E. Corner	53.525481 N. Lat.	53°31' 31.7"N. Lat.	5933931.07 N
	-113.623513 W. Long.	113°37' 24.7"W. Long.	326097.95 E
N.E. Corner	53.525538 N. Lat.	53°31' 31.9"N. Lat.	5933937.25 N
	-113.623477 W. Long.	113°37' 24.5"W. Long.	326100.57 E

ELEVATION (GROUND) (m)	
Premises Centre	676.3
N.W. Corner	676.6
S.W. Corner	676.4
S.E. Corner	676.3
N.E. Corner	676.3

LEASE AREA TABLE		
	ha	Ac.
Tower Site	0.006 ha	0.015 Ac.
Total	0.006 ha	0.015 Ac.

NOTES :

- | | | |
|--|--------------------------|-------------------------------------|
| THE PROPOSED TOWER SITE IS: | YES | NO |
| - AT LEAST 1.60 km FROM AN URBAN CENTRE | <input type="checkbox"/> | <input checked="" type="checkbox"/> |
| - AT LEAST 30 m FROM ANY WATER BODIES | <input type="checkbox"/> | <input checked="" type="checkbox"/> |
| - AT LEAST 1.60 km FROM AN UNLIGHTED AERODROME | <input type="checkbox"/> | <input checked="" type="checkbox"/> |
| - IS LOCATED OUTSIDE OF AN HISTORICAL RESOURCE AREA | <input type="checkbox"/> | <input checked="" type="checkbox"/> |
| - IS FREE OF CONFLICT WITH ANY ENCUMBRANCES OR INTERESTS OF A SURFACE OR PHYSICAL NATURE | <input type="checkbox"/> | <input checked="" type="checkbox"/> |
| - IS OUTSIDE OF ANY NATIONAL OR PROVINCIAL PARK OR OTHER FEDERALLY OR PROVINCIALY PROTECTED AREA | <input type="checkbox"/> | <input checked="" type="checkbox"/> |

Historical Resources Search : 01-MAR-2015

- Bearings are grid, UTM NAD 83(CRS) Zone 12N, derived from GNSS observations at ASCM 391268 and are referred to 111° West Longitude.
Combined Scale Factor = 0.999868

ELEVATION DATUM :
ASCM 391268
Published Elevation = 677.193

I, REID EGGER, ALBERTA LAND SURVEYOR, OF EDMONTON, ALBERTA, CERTIFY THAT THE FIELD SURVEY REPRESENTED BY THIS PLAN IS TRUE AND CORRECT TO THE BEST OF MY KNOWLEDGE, WAS CARRIED OUT IN ACCORDANCE WITH THE ALBERTA LAND SURVEYORS' ASSOCIATION MANUAL OF STANDARD PRACTICE, WAS PERFORMED BETWEEN THE DATES OF FEBRUARY 24TH 2015, AND MARCH 10TH, 2015

 12-MAR-2015
ALBERTA LAND SURVEYOR DATE SIGNED

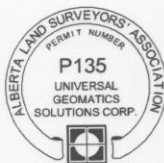






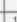

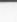




TABLE OF CROSSINGS		
1	Water Line	
OTHER SURFACE IMPACT CONSIDERATIONS		
FOR: Rogers Communications Inc.		



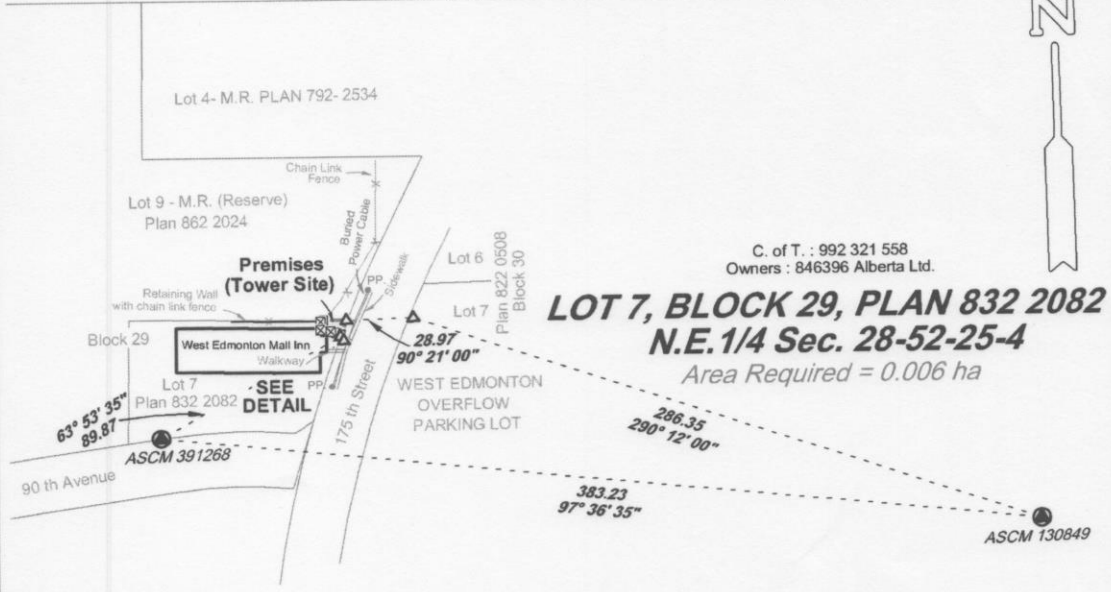
LAND OWNER
C. of T. : 992 321 558
OWNER : 846396 Alberta Ltd.

I/We the landowner(s), agree to the premises as outlined on these plans.
I/We also agree that Rogers may substitute these plans to that certain Telecommunications Site
Agreement dated _____ between
846396 Alberta Ltd. as a Landlord and
Rogers Communications Inc. as a Tenant.
Dated on the ____ day of _____, 2015.

- LEGEND :
- ALBERTA SURVEY CONTROL MARKER SHOWN THUS 
 - STATUTORY IRON POSTS FOUND SHOWN THUS 
 - STATUTORY IRON POSTS PLACED SHOWN THUS 
 - 30 cm IRON SPIKE FOUND SHOWN THUS 
 - 30 cm IRON SPIKE PLACED SHOWN THUS 
 - NON-MONUMENTED POSITION SHOWN THUS 
 - PORTIONS REFERRED TO BOUNDED THUS 
 - DISTANCES ARE IN METRES AND DECIMALS THEREOF.
 - ELEVATIONS OUTLINED THUS 
 - POWER POLE 
 - BURIED CABLE 
 - BURIED PIPE 

0	UNIVERSAL Geomatics Solutions Calgary - Edmonton - Grande Prairie - www.ugsc.ca	Original Plan Issued	MOKA	12-MAR-2015	
		Rev.	DESCRIPTION	DWN/APP DATE	
REVISION	DWN / CHK	CH, MO, KA	SHEET : 1 OF 3	JOB No. : 15-0104CL	DWG. No. : 150104F01

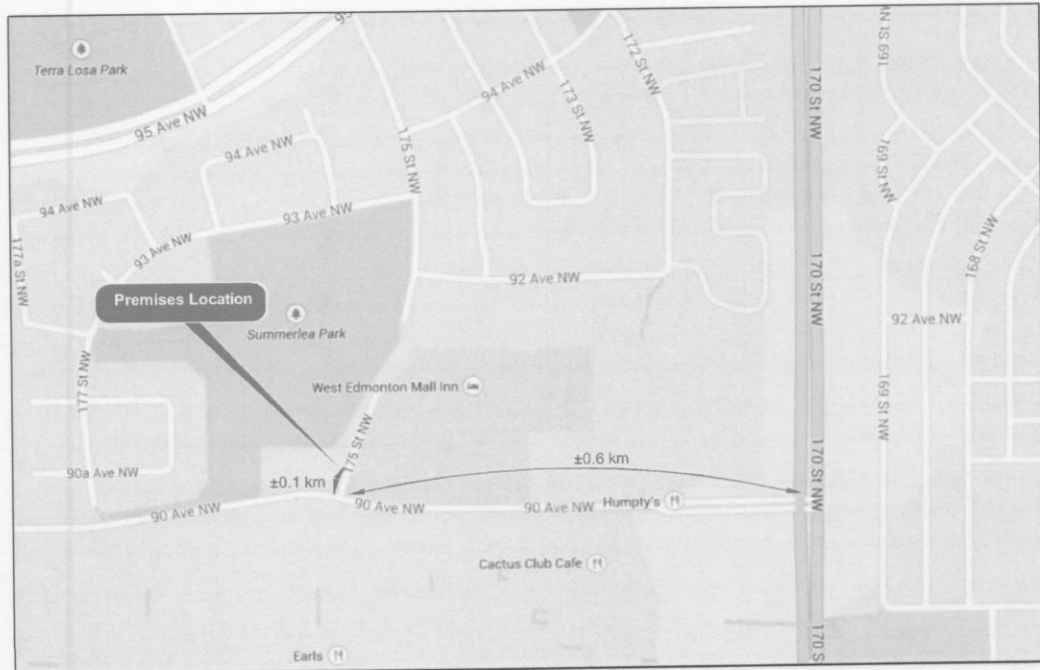
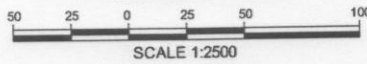
S.E. 1/4 Sec. 33-52-25-4



C. of T. : 992 321 558
 Owners : 846396 Alberta Ltd.

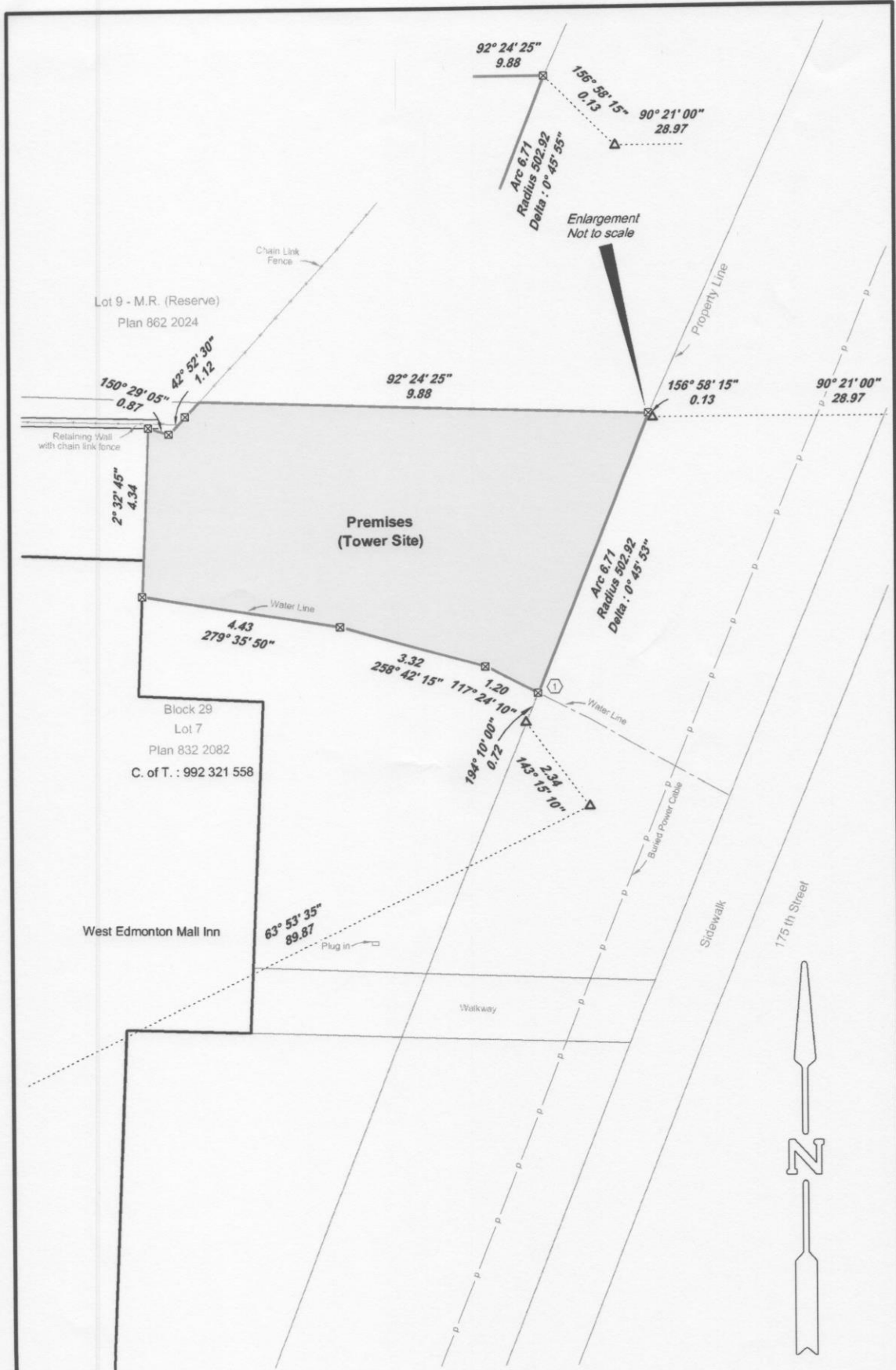
LOT 7, BLOCK 29, PLAN 832 2082
N.E. 1/4 Sec. 28-52-25-4
 Area Required = 0.006 ha

PREMISES PLAN

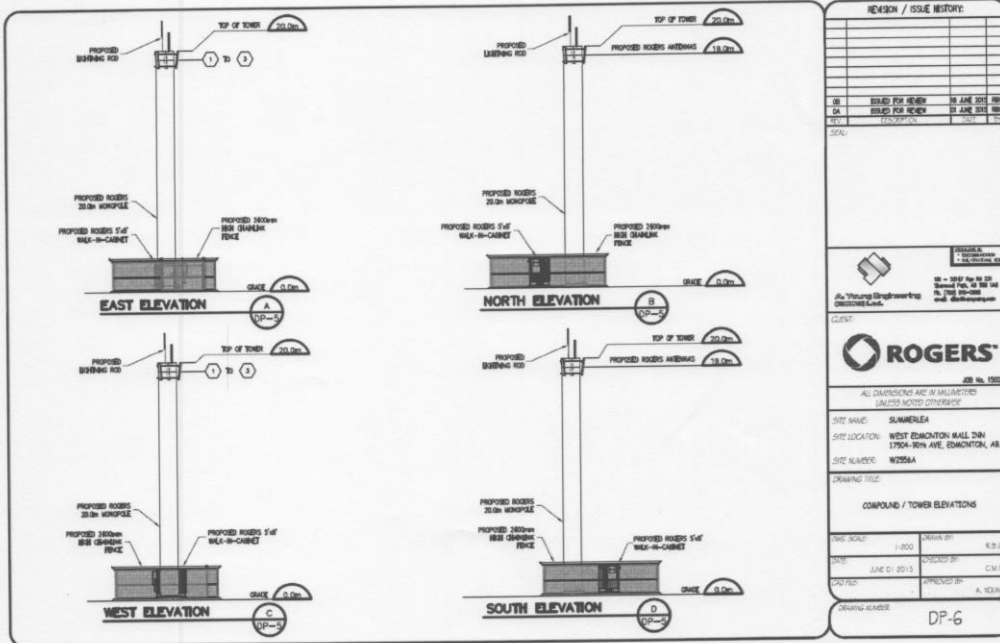


Access Route Map
 Not To Scale

Note: Image provided by Google Map



Rogers Summerlea W2556 - Tower Elevation Drawings



Rogers Summerlea W2556 - Sample Monopole Tower





Rogers Summerlea W2556 - Notification Area

